



Presenter: David Ardito

EMERGENCY PLANNING

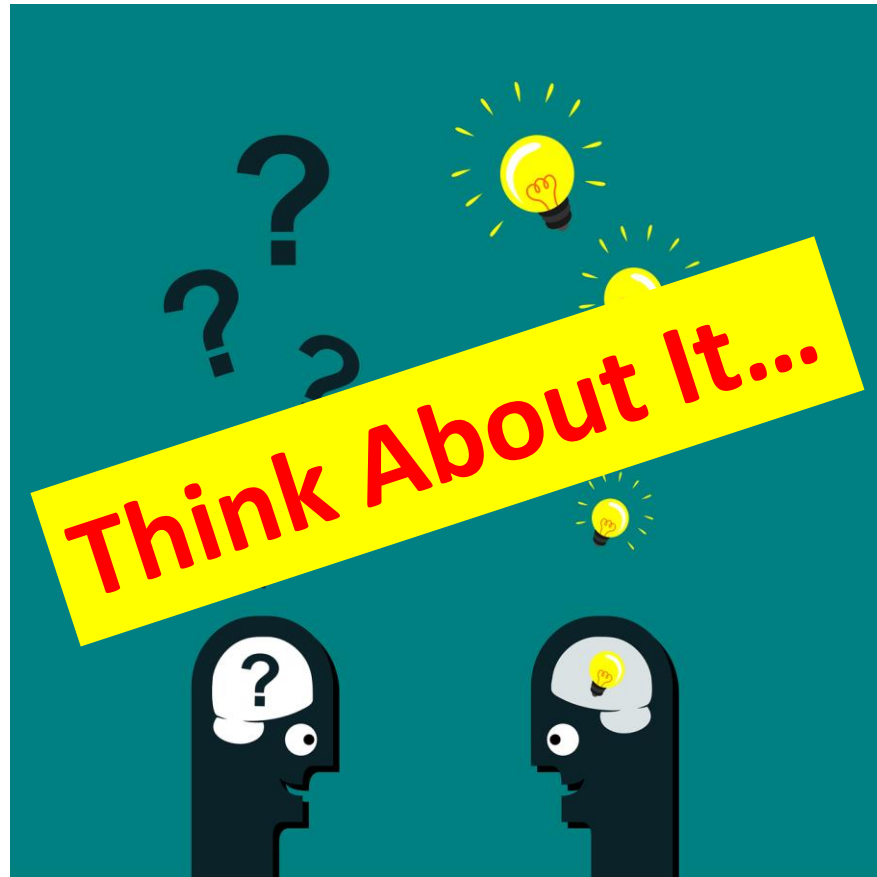
Could it happen in your
workplace?

Emergency Defined



A serious unexpected
and often dangerous
situation requiring
immediate action

Self-Reflection



- Have you ever experienced an emergency at home?
- How did you react?
- If you knew how to respond in advance, would you have responded differently?

What Does the Law Say?

- Regulation 851 (Industrial)
 - Requires procedures for emergencies related to molten material **(87.6)**
 - When working with hazardous biological or chemical agents, have emergency equipment and procedures in place **(124)**
 - Have workers trained in these procedures **(130)**



What Does the Law Say?

- Regulation 213 (Construction)
 - Constructors for a project must have written emergency procedures for the project **(17)**
 - Must have written procedures for worker rescues from suspended work platforms **(141.5)**
 - Must have written rescue procedures for platforms, buckets, baskets, etc. **(153(13))**
 - Must have written procedures for rescuing underground workers **(264)**



What Does the Law Say?

- Regulation 267 (Health Care)
 - Emergency procedures needed when working in restricted spaces (tank, vat, etc.) **(42)**
 - Emergency instructions for an autoclave or sterilization machine posted adjacent to it **(60)**
 - Emergency procedures required for suspended scaffolds **(91)**
 - Emergency procedures for antineoplastic drugs (for cancer treatment) **(97)**



What Does the Law Say?

- These regulatory requirements do not cover all that is needed
- You will find more under codes, such as the fire code
- Many must be determined based on an assessment of your workplace



Emergency Examples for all Workplaces

- Fire/explosion
- Gas Leak (natural gas or other)
- Power Failure
- Severe Weather (tornado, earthquake, bad storms, hurricanes)
- Violence (internal or external)
- Medical Response



Emergency Examples that are Unique

- Chemical Exposure/Spill
- Fall from Heights
- Vehicular Accidents
- Falls into Water
- Exposure to Designated Substances



Emergency Checklist

- Use a checklist to inventory what emergency procedures are needed
- Make sure the checklist is customized to your workplace
- Use the checklist to help you stay on track
- Use the checklist as part of your workplace assessment



Emergency Contributors

Contributors to consider in your assessment:

- People in your workplace
- Place you are located
- Process you perform
- Products you have



Assessment Considerations

- People
 - Do you have partners that work together?
 - Do you have workers with known medical issues?
 - Do you employ workers with disabilities that may need assistance in the event of an emergency?
 - Do you have workers that are prone to violence?



Assessment Considerations

- Place
 - What business surround the location or your workplace?
 - Chemical facilities
 - Fuel facilities
 - High traffic areas
 - Facilities that may pose a violence threat



Assessment Considerations

- Process
 - Does the process involve heavy equipment?
 - Does the process involve working from heights?
 - Does the process involve heavy lifting?
 - Does the process involve the storage of chemicals?



Assessment Considerations

- Products
 - Do you have high levels of combustible dusts?
 - Does your workplace use fossil fuels?
 - Does your workplace involve the use of hazardous chemicals?
 - Do those hazardous chemicals require PPE to be worn in the event of an emergency?



Assessment Considerations

- Many emergencies will apply to all workplaces, but some are very specific to what your workplace does



Assessment Considerations

- Safety Data Sheets (SDS)
 - Have you reviewed them?
 - Are there specific emergency response procedures you are aware of?
 - Is there specific PPE required?
 - Are motors throughout the workplace intrinsically safe?
 - Do they need to be?
 - SDS can help you create your procedures



Assessment Considerations

- Must consider all potential hazards and their associated risk(s)
- Must cover all legally required emergency procedures, based on your industry
- Should create a list of emergency procedures to implement
- Consult the JHSC or Health and Safety Representative(s) to ensure the list is inclusive



Muster Points...

- Outdoor evacuation area
- Does your workplace have one?
 - Should be away from the building
 - Advise against enclosed areas
 - Free from hazardous traffic, where possible
 - Should be labelled as “Muster Point” or “Evacuation Area”
 - Must allow emergency responders into the area



Muster Points...

- Indoor meeting area
 - For severe weather/threats of violence
- Does your workplace have one?
 - Should be away from windows
 - Near solid walls
 - Possibly with lockable access



Muster Point Rules...

- Ensure no one leaves
 - No going to get a coffee
- Supervisor/Manager must conduct a head count (workers and visitors)
- Compare the head count to attendance (workers and visitors)
- Attendance documents must be easily accessible



Other Considerations

- Do you have your emergency contact information posted?
 - Make sure it stands out for easy viewing
- Do you have an emergency equipment checklist?
 - Is emergency equipment checked as part of the monthly inspection?



Emergency Training

- Supervisors should always take the lead for their workers
- Mock drills should be conducted for all emergencies
- Practice makes “near-perfect”
- Should be conducted annually as a reminder to all
- Random drills may be best
- You may need to notify your alarm company and/or the fire department



Emergency Training

- Document the training given
- Have workers ask questions afterward
- Use feedback to improve the emergency plan(s)
- Review annually
- Are visitors/contractors aware of how to respond to an emergency?



If you need help, we're here!



- Assistance with assessing emergency plan needs
- Assistance with creating your emergency plans
- Ability to train your staff for you and lead drills



About Industrial Safety Trainers

Servicing Ontario and beyond for more than 20 years!

- Training and consulting services
- Locations in Barrie and Ottawa
- Services available across Canada
- Onsite classroom training and Distance learning available for most (Zoom or MS Teams)



Any Questions?

Please feel free to contact me!

Email: david@istcanada.ca

Ph. (705)792-0128 x116



THANK YOU FOR ATTENDING TODAY!