



CONSTRUCTION
SAFETY TRAINERS.CA

ELEVATING WORK PLATFORMS



COURSE LENGTH: 6 hours + (1 practical driving evaluation per participant)

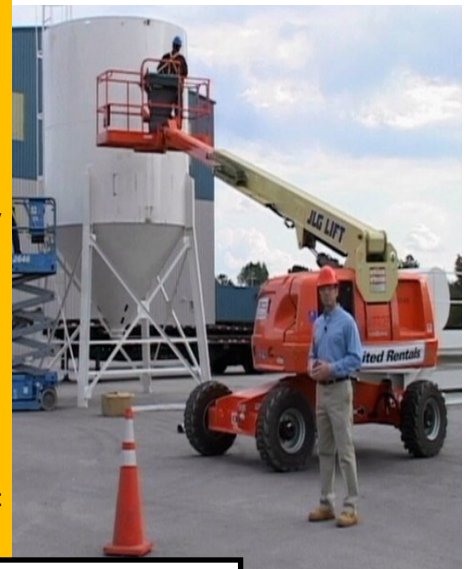
COURSE INCLUDES: Training Manuals, Wall Certificate, Wallet cards, Records of Training, Attendance Record, Tests, Driving Evaluations

LOCATION: Training sessions are available onsite at your facility, publically across Ontario, or our state of the art training facility. If your facility does not have access to a boardroom, IST has a mobile classroom called the Safety Bus. Please contact our office for more detailed information about training formats and date availability.

PRICE:

- Minimum 5 Participants—\$149.00 Per Person
- 6-10 Participants—\$134.00 Per Person
- 11-20 Participants—\$120.00 Per Person
- 21 + Participants— \$108.00 Per Person *Plus HST

1 practical evaluation is inclusive per participant (either Scissor Lift or Boom Man Lift). If a second evaluation is required there is a cost association of \$25.00 per participant



Ministry of Labour
Authorized
Training Providers
of Certification Training

Phone: 705.792.0128
Toll-Free: 800.219.8660
Fax: 705.792.6619
Ottawa: 613.274.3662

Contact Us
For All Your
Health & Safety
Training Needs

www.constructionsafetytrainers.ca

CONSTRUCTION SAFETY TRAINERS
A DIVISION OF



**ONTARIO'S WORKPLACE SAFETY
TRAINERS & CONSULTANTS**

Manufacturing • Service Industry • Construction • Health Care



ADDITIONAL INFORMATION

COURSE CONTENT

- Legislative Requirements
- Operator Qualifications
- Hazards—People, Equipment, Material, and Environment
- Workplace Pre-Use Inspections
- Characteristics of Scissor Lifts and Vertical Mast Lifts
- Characteristics of Articulating and Telescopic Boom Lifts
- Equipment Inspections and Operational Stability
- Fall Protection
- Rescue Planning

LEGAL REQUIREMENTS

Occupational Health and Safety Act – Section 25(2)(a),(d) and (h)
Ontario Regulation 851 for Industrial Establishments – Section
51,52,55-61,85

Ontario Regulation 213 for Construction Projects-Section 26,143-149

Ontario Regulation 67 Section 13

CSA B354.1-04 Portable Elevating Work Platforms

**Mandatory training
for anyone who is
authorized to operate
an Elevating Work
Platforms including
Scissor Lifts and Zoom
Boom Manlifts**

FAQ'S

Who has to have Elevating Work Platforms Training (EWP)?

Answer: Workers who may operate or work in an Elevating Work Platforms. It is misunderstood that only the operator that operates the controls, requires training. Due diligence states that all workers who are at risk shall be trained. If the operator has an accident, it is essential that their helper has the required training to assist in emergency situations. It is also required that supervisors and employers are trained to ensure proper operation and safety.

How long is the training good for?

Answer: The CSA standard for EWP does not identify an “Expiry Date” or when a refresher is required. Industry standards dictate that this course reflect the standards for other lifting devices; training should be refreshed at the 3 year mark.

Does the operator need to carry their wallet card on them at all times?

Answer: The MOL may ask for it, but they are not required to produce it on demand. Time will be given to get it. However there is a higher likelihood that a project manager on a construction site will ask for it and they have the right to stop the work if they feel that the worker is not properly trained. It is recommended to carry your training card to avoid

www.constructionsafetytrainers.ca